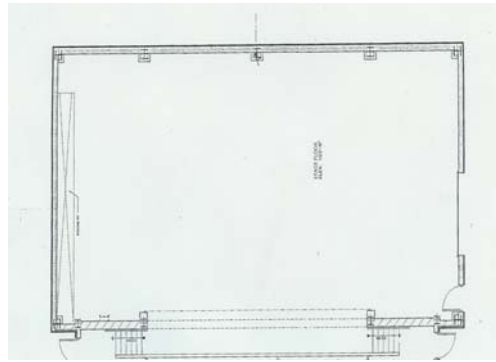


**Stage**



(Not to scale)

Stage Width:	SR locking rail to SL wall	66' 6"
Wing Space:	SR (prosc. to locking rail)	13'
	SL (prosc to wall)	16'
Stage Width:	SR (center line to SR locking rail)	31' 6"
	SL (center line to SL wall)	35'
Stage Depth:	DS edge of apron to back wall	36' 4"
	US edge of pros. To back wall	30' 4"
	House curtain to back wall	30' 6"
Proscenium	Width	38'
	Height	19' 10"
	Thickness	2'

**Floor**

Stage floor is pine, stained black and sealed.  
 Floor is covered with Masonite, painted black.  
 Painting of floor is NOT allowed.

**Loading Dock**

Dock height is 4' and is level with the stage floor.  
 The dock loading zone is 15' wide.  
 Loading door dimensions are 10' wide x 11' tall.  
 There is NO RAMP to stage level.

**Orchestra Pit** – Covered unless notified 2 weeks in advance. Addl. charge

*As Of 1/6/07- Orchestra Pit is currently covered @ seating level.*  
 Orchestra pit is 6'-6" below stage floor, with a curved house edge.  
 Width: 38'  
 Depth at Centerline 10'-6"  
 Depth at Edges 6'-6"

**Dressing Rooms**

(2) 10 person capacity dressing rooms equipped with make-up counter, mirrors w/ lights, sink, toilet, and shower.

**Equipment**

- 50 Orchestra Chairs
- 50 Music Stands
- 36 Music Stand Lights
- 1 Conductor Podium

**Rigging**

Grid is approx. 45' above stage floor.  
 Locking rail is stage right.  
 Batten Length is: 48' (50' for borders)  
 Batten Travel is: 36' 6"  
 Batten low trim is: 5'  
 Batten high trim is: 41' 6"  
 Batten is: 1½" Pipe  
 Batten has: 5 lift lines  
 Pipe weight is: 80 lb.  
 Arbor capacities of: 1200 lb.

**Electrical**

**Company Switches**  
 (1) 400 amp 3 phase disconnect available.  
**Dimmers**  
 120 - Dual-2.4 kw dimmers (Strand CD80)  
**Lighting Control**  
 ETC Expression 48/96  
**Circuits**  
 138 permanently wired house circuits (NOT including work and house lights)  
**Stage Electric circuits** (NOT including two work light circuits per electric)  
 1<sup>st</sup>- 26 circuits  
 2<sup>nd</sup>- 18 circuits  
 3<sup>rd</sup>- 18 circuits  
 4<sup>th</sup>- 18 circuits  
 5<sup>th</sup>- 22 circuits  
**FOH circuits**  
 Catwalk: 24 circuits  
 Box Booms 8 circuits each  
 Booth 1 circuit  
 Throw from catwalk position to edge of stage is 35'.  
**Luminaries**

**Audio**

Mixing position is located in the rear control room.  
**House Sound System**  
**Amps/Processors** ( All located in the control room rack)  
 (1) - Crown USM810 Loudspeaker Processor  
 (6) - Crown K-series power amp  
 (4) - EV EQ231 Equalizers  
 (2) - Yamaha REV100 Digital Reverb  
 (1) - Crown Digital Processor/Mixer

**Speakers**

- SLS LS8695 L/R Array Loudspeaker
- EV FRX-660 Upper Seating Loudspeaker
- EV FRX-940 Lower seating loudspeaker
- EV FRX-181 Subwoofer

**Console**

Yamaha M2500 Mixing Console, 40 Channel

**Auxiliary Audio**

- Audiocom MS-2001 Headset console
- Tascam CD-A-500 CD/Tape Deck
- Tascam CDRW 700
- JVC DVD Player
- JVC Super VHS Player

**Microphones**

- (4) EV N/D767a Hand-held Microphone
  - (2) Shure SM57 Hand-held Microphone
  - (8) Shure ULXP Wireless (4)SM-58, (8) Lavaliera
- Other microphones available as needed

**Communication**

- Telex Wired intercom system-
- Four wired headset/belt pack units
- Four 50' Telex cables
- Plug-in stations located throughout house/backstage/booth/catwalks

**Line Set Schedule** – Subject to change

Line	Item	Dist. from Prosc.
V	Valance	0'-4" Deadhung
HC	House Curtain	1'-4" Deadhung
1	Border	2'-2"
2	Leg	2'-8"
3	1 <sup>st</sup> Electric	3'-8"
4	Scenery	4'-8"
5	Border	5'-8"
6	Leg	6'-2"
7	2 <sup>nd</sup> Electric	7'-2"
8	Scenery	8'-2"
9	Mid-Stage Traveler	8'-8"
10	Scenery	9'-8"
11	Projection Screen	10'-2"
12	Border	11'-2"
13	Leg	11'-8"
14	3 <sup>rd</sup> Electric	12'-8"
15	Scenery	13'-8"
16	Scenery	14'-2"
17	Scenery	15'-2"
18	Border	16'-2"
19	Leg	16'-8"
20	4 <sup>th</sup> Electric	17'-8"
21	Scenery	18'-8"
22	Scenery	19'-8"
23	Scenery	20'-8"
24	Border	21'-8"
25	Leg	22'-2"
26	5 <sup>th</sup> Electric (cyc lights)	23'-2"
27	Scenery	24'-2"
28	Scenery	25'-2"
29	Blackout Curtain	27'-2"
30	Cyclorama	28'-2"

Electrics and Projection Screen are permanent.  
 (1)Black and (1)White scrim available.

**Technical Director**

Rick Clever  
 567-661-7930  
[richard\\_clever@owens.edu](mailto:richard_clever@owens.edu)  
 Updated 1/25/2012