



**GET STARTED ON AN
IN-DEMAND CAREER.**

WIDE-AREA NETWORKING TECHNOLOGY PROGRAM

Associate of Applied Science

Wide-Area Networking technologists wire, configure, and maintain the routers, switches, and security appliances that connect home users and businesses to the global information network. These technicians maintain network LANs, WANs and intranets.

JOB OPPORTUNITIES FOR GRADUATES

Have you ever wondered how your email gets from your computer to its destination? Or how businesses connect to one another through the World Wide Web? When your email goes where you need it to go and businesses across the world are able to connect to each other, there are a few wide-area networking technicians to thank.

The Wide-Area Networking Technology Program offers a skills-to-jobs program developing digital skills through strong public-private partnerships, high-quality curriculum and inclusive workforce development programs. Owens has some of the longest-running, purpose-driven hardware and digital skills degree programs in Northwest Ohio! Our students learn how to troubleshoot, repair and maintain various portions of the internet, about network hardware installation, configuration and maintenance, and related cyber security topics focusing on real world labs and CISCO products using hardware and cloud-based solutions. Students have the ability to earn industry certifications along their journey. Students will be prepared for a variety of exiting careers that are in high demand, both locally in Northwest Ohio and globally.

Career pathways include: network technician, support engineer, network administrator, network designer, network engineer and more.

SALARY

The job market for wide-area networking or CISCO technicians is showing a 12% increase from 2012-2022. The median annual wage in 2012 for a network engineer with a bachelor's degree is \$72,560 and \$40,000-\$50,000 for an associate degree (www.bls.gov).

ACCREDITATION

Accredited by the Association of Technology, Management, and Applied Engineering (ATMAE).



LOCATIONS

Toledo-area Campus
Findlay-area Campus

OTHER PROGRAM INFORMATION

Many courses in this degree may require students to take hybrid or online courses. The Computer Information Systems (CIS) Department works closely with local businesses and organizations to ensure our students can meet their needs with the appropriate skills and directly with CISCO to deliver the best courses possible. We work with leading employers in Northwest Ohio and the rest of the state to secure internships and employment opportunities for our students.

OWENS.EDU

Office of Admissions

Toledo-area Campus - (567) 661-7777
Findlay-area Campus - (567) 429-3509

School of Science, Technology, Engineering and Mathematics

(567) 661-7457



OWENS
COMMUNITY COLLEGE

PROGRAM CURRICULUM

WIDE-AREA NETWORKING TECHNOLOGY PROGRAM Associate of Applied Science

REQUIRED COURSES

The Age of Coursework for EET 141, EET 241, EET 280, EET 281, EET 282, EET 283, EET 284, EET 285, EET 286, EET 287, and EET 289 is 5 years - chair approval required for courses beyond that. Please refer to College Policy, Chapter 2 - Academic, 3358:11-2-22 Age of Coursework Policy.

High school and adult career-technical students who successfully complete specified technical programs are eligible to have technical credit transfer. For more information on career-technical course work that students can complete for transfer, visit The University System of Ohio Board of Regents, Career-Technical Credit Transfer (CT)2 website or contact your advisor.

1ST SEMESTER

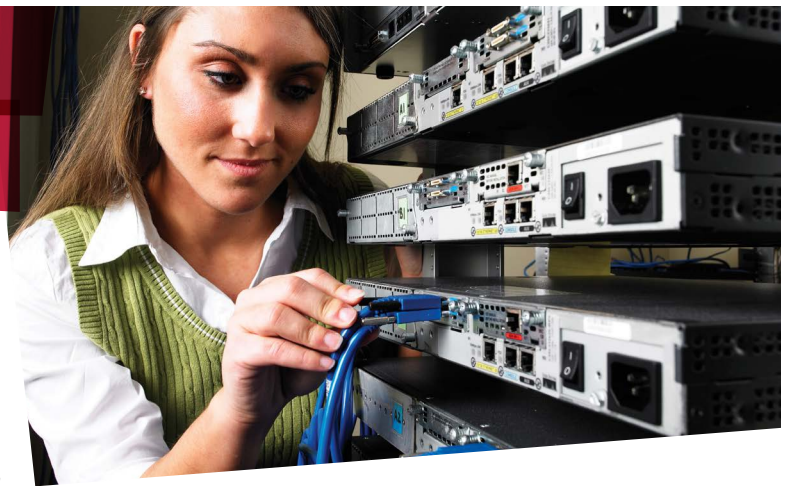
EET 118	C Programming	Credits: 3(Lec: 2 Lab: 3)
EET 100	Fundamental DC Analysis	Credits: 3(Lec: 2 Lab: 3)
EET 281	Network Fundamentals	Credits: 2(Lec: .50 Lab: 4.50) (1st 8 Week Session)
EET 282	Routing Protocols and Concepts	Credits: 2(Lec: .50 Lab: 4.50) (2nd 8 Week Session)
STM 105	Technology in Society	Credits: 2(Lec: 2)
MTH 122	Math for Computing	Credits: 4(Lec: 4)

2ND SEMESTER

EET 130	Computer Diagnosis	Credits: 3(Lec: 2 Lab: 3)
EET 218	Java Programming	Credits: 3(Lec: 2 Lab: 3)
EET 283	LAN Switching and Wireless	Credits: 2(Lec: .50 Lab: 4.50) (1st 8 Week Session)
EET 284	Accessing the WAN	Credits: 2(Lec: .50 Lab: 4.50) (2nd 8 Week Session)
ENG 111	Composition I*	Credits: 3(Lec: 3)
_____	Social and Behavioral Sciences Elective	Credits: 3(Lec: 3)

3RD SEMESTER

EET 222	Network Securities	Credits: 3(Lec: 2 Lab: 3)	Select from: EET 285, EET 286, EET 287 for optional pathway.
EET 141	Computer Forensics I	Credits: 3(Lec: 2 Lab: 3)	Select from: EET 285, EET 286, EET 287 for optional pathway.
PHY 151	Industrial Physics-Mechanics	Credits: 2(Lec: 2)	
PHY 152	Industrial Physics-Ht Li Sound	Credits: 2(Lec: 2)	
EET 280	Wireless LANs & VOIP/SIP	Credits: 3(Lec: 2 Lab: 3)	
SPE 210	Small Group Communication	Credits: 3(Lec: 3)	
EET 175	Network Operating Systems	Credits: 3(Lec: 2 Lab: 3)	



4TH SEMESTER

EET 241	Computer Forensics II	Credits: 3(Lec: 2 Lab: 3)	Select from: EET 285, EET 286, EET 287 for optional pathway.
EET 208	UNIX Concepts	Credits: 3(Lec: 2 Lab: 3)	
BUS 120	Principles of Management	Credits: 3(Lec: 3)	
EET 289	Security Appliances	Credits: 3(Lec: 2 Lab: 3)	

*Ohio Transfer Module Course

More information about the Ohio Transfer Module Course can be found at www.ohiohighered.org/transfer/transfermodule

OTHER INFORMATION

During the first year of the program, students take the following required courses:

- EET281 and EET282, Network Fundamentals and Routing Protocols and Concepts respectively. Once these courses are completed the student is eligible to take the CISCO ICND1 certificate exam. The next two required courses during the first year of the program are EET283 and EET284, LAN Switching and Wireless and Accessing the WAN respectively. Upon completion of EET283 and EET284 the student is eligible to take the ICND2 certificate exam to get their CCNA. The alternative route to the CCNA (CISCO Certified Network Associate) license is to take EET281, EET282, EET283, and EET284 then take the longer CCNA license exam.

During the second year of the program, students may take the following courses:

- EET285, EET286, and EET287, CISCO Route, Switch, and TSHOOT respectively. Upon completion of each course individually, the student is eligible to take the three exams that lead to the CCNP (CISCO Certified Network Professional) license.

OWENS.EDU

Office of Admissions

Toledo-area Campus - (567) 661-7777
Findlay-area Campus - (567) 429-3509

School of Science, Technology, Engineering and Mathematics

(567) 661-7457



OWENS
COMMUNITY COLLEGE

Your success starts here.